

®

gourmia

Gourmia

Bottle Sterilizer

Model# JBS-100

USER MANUAL

Read this manual thoroughly
before using and save it for
future reference

FOR CUSTOMER SERVICE
QUESTIONS OR COMMENTS
VISIT US @ GOURMIA.COM
INFO@GOURMIA.COM
OR CALL 888.552.0033

**Visit GourmiaJr.com for important product information and
regularly updated manuals**

Model: JBW-100
© 2018 Gourmia
www.gourmia.com
The Steelstone Group
Brooklyn, NY

All rights reserved. No portion of this manual may be reproduced by any means whatsoever without written permission from The Steelstone Group, except for the inclusion of quotations in a media review.

Although every precaution has been taken in the preparation of this manual, The Steelstone Group assumes no responsibility for errors or omissions. Nor is any liability assumed for damages resulting from the use of the information contained herein. Although every effort has been made to ensure that the information contained in this manual is complete and accurate, The Steelstone Group is not engaged in rendering professional advice or services to the individual consumer; further, The Steelstone Group shall not be held responsible for any loss or damage allegedly arising from any information or suggestion in this manual.

Welcome to the Convenient World of *Bottle Sterilizing* **from Gourmia**

Thank you for purchasing a Gourmia Bottle Sterilizer!

The pages of this manual offer comprehensive instructions to guide you through the functions and features of the Gourmia Bottle Sterilizer. Inside this guide you will also find information on its modes of operation, complete step-by-step instructions for the operation, assembly, cleaning, and maintenance of your appliance.

Please read all safety instructions thoroughly to ensure safe usage at all times.

Thank you for your purchase. We sincerely hope you will enjoy this as well as all the many innovative products brought to you by Gourmia.

IMPORTANT SAFEGUARDS

Before using this product, please read this manual carefully and save for future reference.

SAFETY INSTRUCTIONS

When using any electric appliance, basic precautions should always be followed to reduce the risk of fire, electric shock and injury, including the following:

1. Read all instructions.
2. Do not touch hot surfaces. Use handles or knobs.
3. To protect against electrical shock do not immerse cord, plugs, or the base of the machine in water or other liquids.
4. Close supervision is necessary when any appliance is used by or near children.
5. Unplug from outlet when not in use and before cleaning. Allow to cool before putting on or taking off parts.
6. Do not operate any appliance with a damaged cord or plug or after the appliance malfunctions or has been damaged in any manner. Return appliance to the nearest authorized service facility for examination, repair, or adjustment.
7. The use of accessory attachments not recommended by the appliance manufacturer may cause injuries.
8. Do not use outdoors.
9. Do not let cord hang over edge of table or counter, or touch hot surfaces.
10. Do not place on or near a hot gas or electric burner, or in a heated oven.
11. Extreme caution must be used when moving an appliance containing hot oil or other hot liquids.
12. Always attach plug to appliance first, then plug cord into the wall outlet. To disconnect, turn any control to "off", then remove plug from wall outlet.
13. Do not use appliance for other than intended use.
14. Before serving be sure food is at safe temperature.
15. Before serving, unplug cord from wall outlet and dish. Do not leave cord within child's reach.
16. This appliance is for adult use only. Persons under the age of 13 should not use this product.
17. Always be cautious around steam.
18. Do not exceed the maximum level of water- the appliance will not work.
19. Do not use the appliance for anything other than its intended use.
20. Never touch the heating elements unless the appliance is off, unplugged, and cool.

Electromagnetic field (EMF)

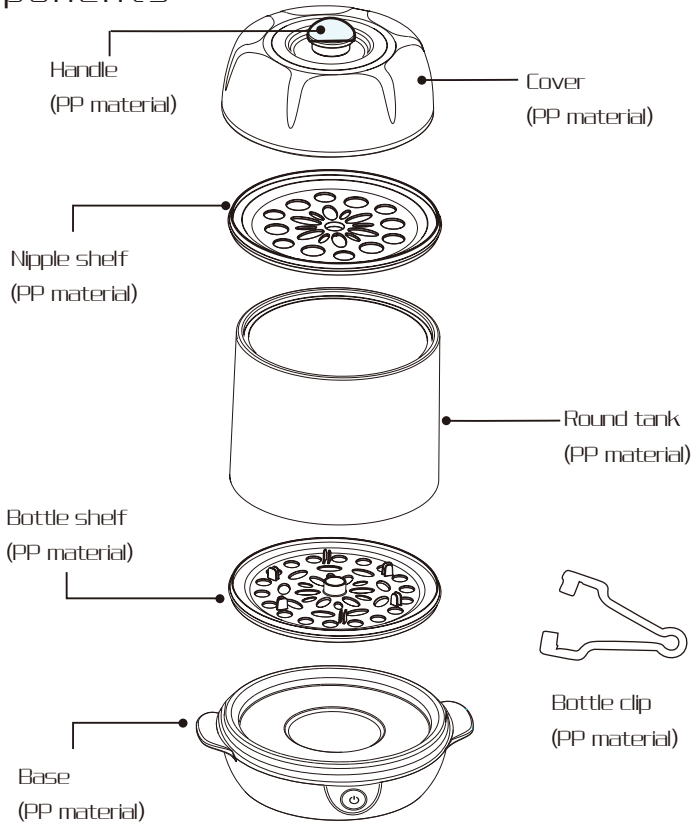
This appliance complies with all standards relating to electromagnetic fields (EMFs). It meets the safety rules established on the basis of current scientific knowledge provided it is handled correctly and in compliance with these instructions.

TABLE OF CONTENTS

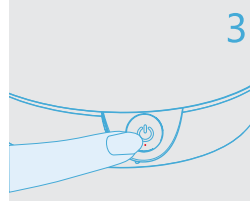
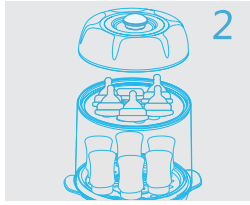
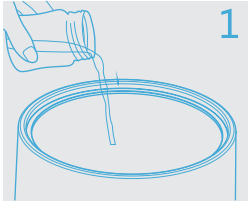
Know Your Bottle Sterilizer	6
Sterilizing	7
Steam Cooking	8
Cleaning and Maintenance	9

Know Your Bottle Sterilizer

Components



Sterilizing

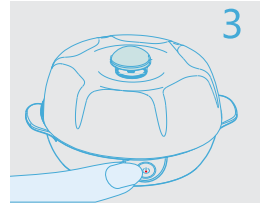
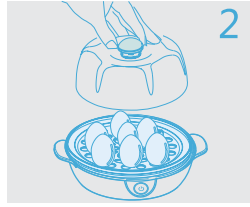


Note: Please ensure that your sterilizer is on a flat, even surface.

1. Unplug the unit.
2. Remove everything from the base.
3. Pour 4 oz (120 ml) of water directly unto the heating element (the metal circle).
4. Place the bottle shelf on the base.
5. Place your bottles on the bottle shelves.
 - a. To secure the bottles, use the clips on the bottle shelf to hold the bottle openings.
 - b. To do this, take the edge of a bottle's mouth and press firmly into a bottle clip.
 - c. The bottles must be upside down and open, as shown in the second picture.
6. Place the round tank on the bottle shelf
7. Place the nipple shelf on top of the round tank.
 - a. Place each nipple over a hole as shown in the picture to ensure that they are completely bathed in steam.
8. Place the lid on the nipple shelf.
9. Plug in the unit.
10. Press the green button as shown in step 3.
 - a. The button will light up and the sterilization cycle will begin.
11. Once the cycle is complete, the machine will beep and the button light will turn off.
12. Wait a few minutes for the steam to dissipate.
13. Use the tongs and the lid handle when opening the unit.
14. Again, let the machine cool off for a few moments.
15. Finally, use the tongs to remove the nipples, nipple shelf, and your bottles.
16. Unplug the unit, remove the round tank, and empty all remaining water.

The steam in the sterilizer is extremely hot. Keep your hands away from the steam, and always let the steam dissipate and the unit cool off before removing anything.

Steam Cooking



1. Unplug the unit and remove all components from the sterilizer base.
2. Pour 4 oz (120 ml) of water directly unto the heating element (the metal circle).
3. Place the bottle rack on the base.
4. Place your food items on the bottle rack.
5. Cover the unit with the lid.
6. Plug in the unit and press the power button. The button will light up.
7. Once the cycle is complete, the button light will turn off and the sterilizer will beep.
8. Let the steam dissipate, then remove the lid.
9. Ensure that your food items are fully cooked.
10. When your food is ready, remove the lid, and use the tongs or a utensil to remove the cooked food from your sterilizer.
11. If your food is not ready, repeat the cycle from the beginning until the food is ready.
12. Use tongs and the lid handle whenever you remove items.
13. Unplug the unit and empty all remaining water.

Do not use food items that can fall or drip unto the base of the sterilizer.

Always ensure that your food is fully cooked before feeding your child.

The steam in the sterilizer is extremely hot. Keep your hands away from the steam, and always let the steam dissipate when done.

Cleaning and Maintenance

Before cleaning, always unplug the unit and wait until it has cooled down.

1. Clean the appliance after each use. Do not use steel wool or any abrasive sponge to clean the appliance.
2. Never immerse the sterilizer base in water.
3. Do not use bleach or any chemical disinfecting solutions to clean the appliance.
4. All components but the base are dishwasher safe. Only use the top rack of the dishwasher!
5. If there is hard water residue on the heating elements, you may wipe them with a damp cloth to remove it.

**FOR CUSTOMER SERVICE
QUESTIONS OR COMMENTS
VISIT US @ GOURMIA.COM
INFO@GOURMIA.COM
OR CALL 888.552.0033**

Gourmia®

